

Grandstream Networks Inc.

Grandstream Networks.
Networking solutions for your business

Vladimir Ivlev
Regional Manager, Europe



WHO IS GRANDSTREAM

Company founded in 2002 in **Boston, MA.**

+600 employees in 14 countries
(+50% R&D Engineers)

Used and sold in **150 countries** around the world

Global presence with offices in the U.S. (Boston, Los Angeles, Dallas), Venezuela, Morocco, China (Shenzhen and Hangzhou) and Malaysia

4 Research and Development Centers

(Dallas, Los Angeles, Shenzhen, and Hangzhou)

2nd largest manufacturer of IP phones; **2nd largest** manufacturer of IP video phones (Frost & Sullivan)



ONE-STOP SHOP



Unified Communications

Voice & Video IP Phones
IP PBXs
Gateways & ATAs
Facility Management
Voice & Video Conferencing
Free Device Management Platform

Networking

Indoor Wi-Fi APs
Outdoor/Long-Range Wi-Fi APs
Wi-Fi Routers
Wired Routers
Network Switches
3x Free Management Platforms



GWN SERIES

Networking Solutions

Our fastest-growing product line, the GWN Series allows you to build powerful and secure networks with industry-leading setup, performance and management. It includes a full portfolio of APs, Routers, Managed Network Switches and 3 free management options.



GWN SERIES NETWORKING SOLUTIONS

3 Free Management Options



1. GWN.Cloud
2. GWN Manager
3. Built-in Controllers

Easy Installation



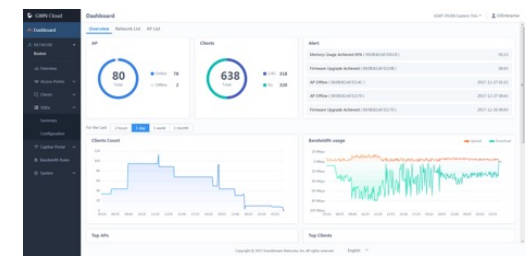
Just scan a barcode with
the GWN app

Large Portfolio of APs, Routers & Switches



Full portfolio of WiFi APs,
Wi-Fi routers and network
switches

Real-time Monitoring, Alerts & Reports



Available on all solutions



MANAGEMENT OPTIONS – GWN SERIES

GWN.CLOUD



- ☒ **FREE**
- ☒ **AWS CLOUD PLATFORM**
- ☒ **MOBILE APP & WEB UI**
- ☒ **UNLIMITED DEVICES**
- ☒ **SECURE CLOUD PROVISIONING**

GWN.MANAGER



- ☒ **FREE**
- ☒ **SOFTWARE CLIENT**
- ☒ **LOCAL SERVER DEPLOYMENTS**
- ☒ **UP TO 3,000 DEVICES**

EMBEDDED CONTROLLER



- ☒ **FREE**
- ☒ **EMBEDDED IN WEB UI**
- ☒ **UP TO 300 APs**

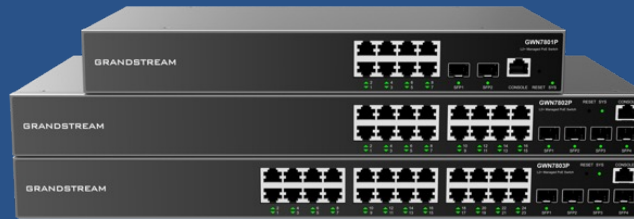




Grandstream Networking Portfolio



Routers



**Network
Switches**



**Wi-Fi
Access Points**



GWN7052/F & GWN7062 Routers



- Powered by Wi-Fi 5 or Wi-Fi 6
- Dual-band 2x2:2 MU-MIMO
- Support from 100 to 256+ concurrent Wi-Fi client devices
- Built-in VPN support
- Secure cloud provisioning through GWN.Cloud
- Supports Mesh (GWN7062) networking & embedded controller



GWN Multi-WAN Gigabit VPN Routers



GWN7001 - 6x Gigabit Ethernet Ports, all ports support WAN/LAN



GWN7002 - 2x Gigabit SFP Ports and 4x Gigabit Ethernet Ports, all ports support WAN/LAN



GWN7003 - 2x Gigabit SFP Ports and 9x Gigabit Ethernet Ports, all ports support WAN/LAN



Built-in VPN,
50 or 100 concurrent
VPN tunnels



Business-grade firewall DDNS,
port forwarding, Anti-DoS,
traffic rules, NAT, ALG, etc.



Provides application,
URL, DNS and web
content filtering



Advanced QoS ensure real-time
performance and traffic
prioritization for network control





- Overview
- Network Settings
- Clients
- VPN
- Routing
- Traffic Management
- AP Management
- Access Control
- External Access
- Firewall
- Basic Settings
- Content Security**
- Traffic Rules
- Advanced NAT
- ALG
- Captive Portal
- Maintenance
- System Settings

Content Security > Add APP Filtering

Basic Information

* Name 1~64 characters

Description 0~128 characters

Filtered Application

All Efficiently identifiable Others

☐ Collaborative

☐ Discord ☐ Slack ☐ Github ☐ Git
☐ Teams ☐ GitLab

☐ Database

☐ PostgreSQL ☐ MySQL ☐ MongoDB ☐ MsSQL-TDS
☐ Oracle ☐ Redis ☐ Cassandra

☐ E-mail

☐ POP3 ☐ SMTP ☐ IMAP ☐ Outlook
☐ POPS ☐ SMTPS ☐ IMAPS ☐ GMail

☐ File Transfer

☐ FTP ☐ NFS ☐ BitTorrent ☐ SMB
☐ Thunder ☐ TFTP ☐ AFP ☐ RSYNC
☐ Pastebin ☐ WhatsAppFiles ☐ Crashlytics ☐ Dropbox
☐ OneDrive ☐ Stealthnet ☐ FTPS

☐ Games

☐ Xbox ☐ Steam ☐ Half life2 ☐ WorldOfWarcraft



Roadmap

UC + Networking Convergence Solution

GCC6000 Series



- Build and manage UC/VoIP solutions and wired/wireless networking solutions with one device
- 4-in-1 solution combines a *Router + Firewall + Switch/Wi-Fi AP + PBX*



Key Functional Modules

Roadmap



GCC6010W

Version 1.0.0.1 



Networking



Firewall



Network Nodes

Version 1.0.0.1 



PBX



UC Endpoints



Version 1.0.0.1 

- Home Dashboard
- Topology
- System Settings
 - General
 - Security
 - Schedule
 - User Management
 - Email/SMS
 - License
- Maintenance
 - Upgrade
 - Backup & Restore
 - Notification

- Network Dashboard
- Network Settings
- VPN
- Routing
- Traffic Management
- Access Control
- External Access

- Firewall Dashboard
- Firewall Policy
- DoS & Spoofing Defence
- Anti-malware
- Intrusion Prevention
- Content Control
- SSL Deep Inspection
- Security Log

- Network Nodes Dashboard
- AP Management
- Wireless Management
- Switch Management
- Clients
- Captive Portal

- PBX Dashboard
- Extension/Trunk
- Call Features
- Messaging
- PBX Settings
- Contacts
- CDR
- RemoteConnect
- Integrations

- UC Endpoints Dashboard
- Fast Provisioning for Large Deployment
- SIP Device Management (VoIP Devices, IP Camera, Door Access, Paging, Intercom, etc)

Network Switches

Simple, Efficient & More
Reliable

The GWN series of network switches are cost-effective solutions that allow small-to-medium enterprises to build scalable, secure, high-performance, and smart business networks. The GWN7800 series are Layer 2+ managed network switches and the GWN7700 series are unmanaged network switches.

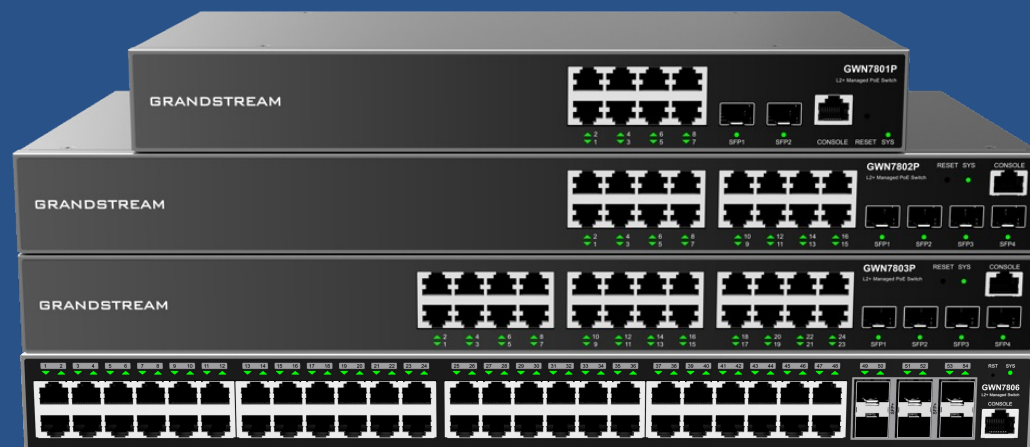




GWN7800 Series

Layer 2+ Managed Network Switches

GWN7801(P) – GWN7802(P) – GWN7803(P) – GWN7806(P)



8 models
4 models with PoE
4 models without PoE



8, 16, 24 or 48
Gigabit ports,
2, 4 SFP or 6 Gigabit SFP+
ports



Managed via Web UI, CLI,
GWN.Cloud or GWN
Manager



Built-in QoS
& Advanced VLAN



Supports IPv4
and IPv6



GWN7810 Series Layer 3 Managed Network Switches

GWN7811(P) – GWN7812P – GWN7813(P)



5 models
3 models with PoE
2 models without PoE



8, 16, or 24 Gigabit
ports, 2 or 4x 10 Gbps
SFP+ ports



Managed via local WebUI,
CLI, GWN.Cloud or GWN
Manager



Built-in QoS and VLAN
For advanced network
prioritization and
segmentation



Supports 56 Gbps,
112 Gbps or 128 Gbps
switching capacity



GWN7830 Series

Layer 3 Aggregation Managed Network Switches

GWN7830 – GWN7831 – GWN7832



3 models
2 or 4 Gigabit ports,
6 or 24 Gigabit SFP ports,
4 or 12x 10 Gbps SFP+ ports



Managed via local WebUI,
CLI, GWN.Cloud or GWN
Manager



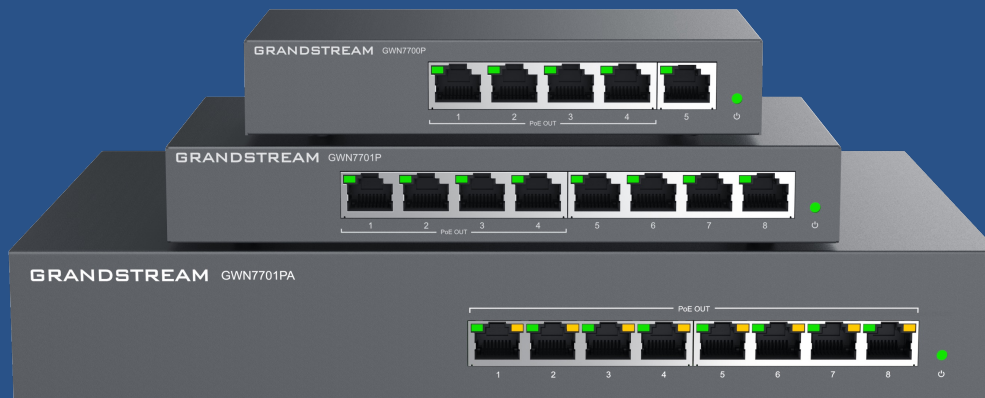
Built-in QoS and VLAN
For advanced network
prioritization and
segmentation



Supports 96 Gbps,
128 Gbps or 240 Gbps
switching capacity



GWN7700 Series Unmanaged Network Switches



11 models
5 models with PoE
6 models without PoE



Up to 48 Gigabit ports,
2,5G ports
-Up to 30W p/ port



LED Indicators:
Per port: link/activity/speed
Per device: power



Broadcast/multicast/
Unicast storm control
to monitor traffic levels



Auto MDI/MDIX
crossover on all ports

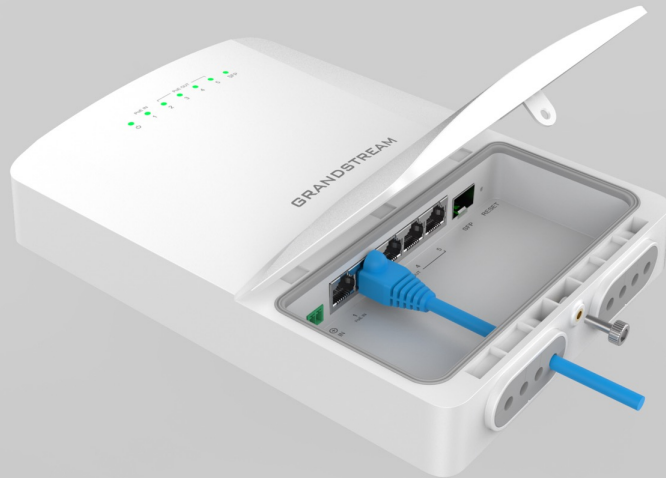
Fiber Modules



- Connector Type: Duplex LC
- Single-Mode / Multi-Mode
- 1310nm / 850nm
- 1.25Gbps SFP / 10Gbps SFP+
- 20km / 10km / 0.55km / 0.3km



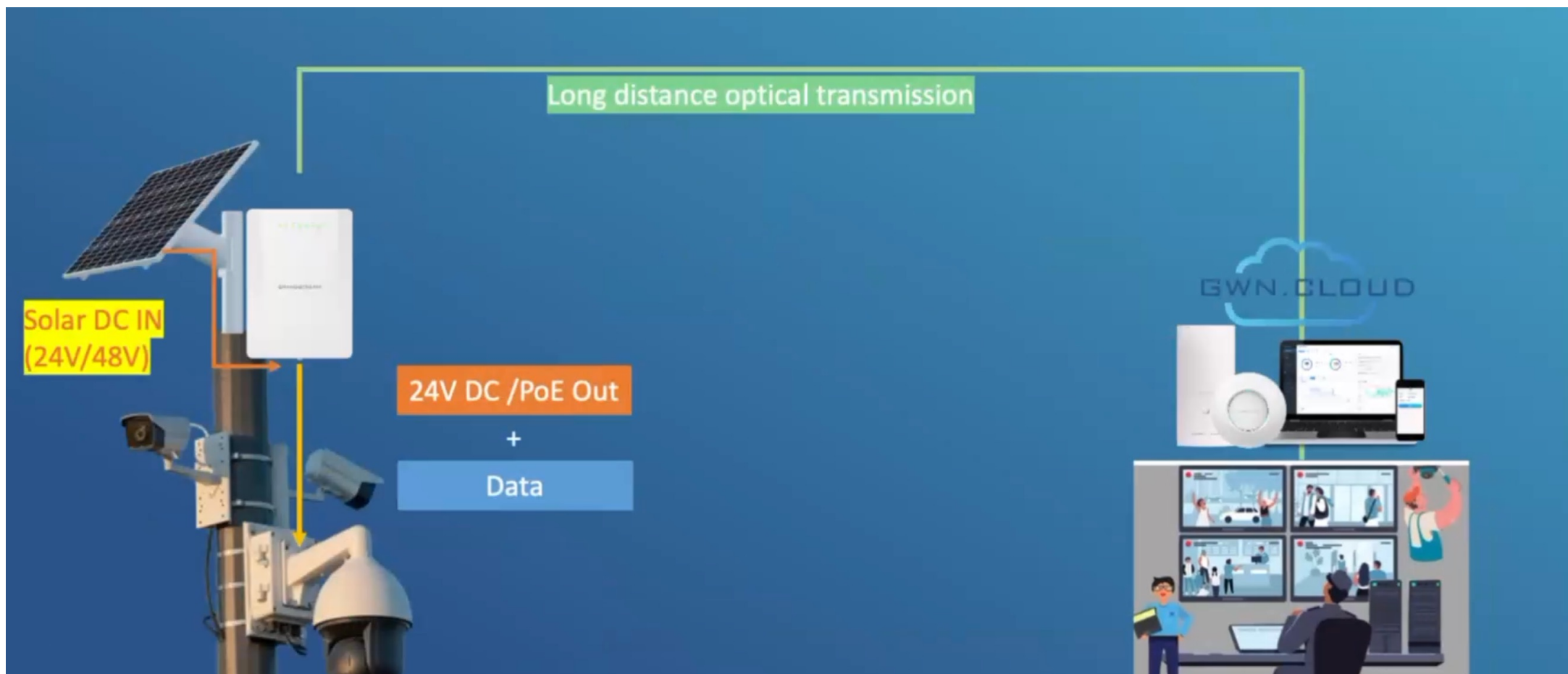
GWN7800P



Roadmap

- Layer 2+ managed
- 1x SFP, 5x GbE, 1x PoE++ Input, 4x PoE+ Output (max 48W PoE power budget)
- +12VDC—48VDC input port with screw connector (but no PSU included)
- -30 to 60°C operating temperature, IP66
- 6KV/4KV surge protection on power line and network ports
- Support configurable long cable mode for special scenarios (up to 250-meter cable at 10Mbps network speed)





GWN SERIES – ACCESS POINTS

Powerful Networking Solutions

Grandstream's Wi-Fi access points offer high network performance, industry-leading coverage ranges, fast provisioning, and multiple management options.

GRANDSTREAM





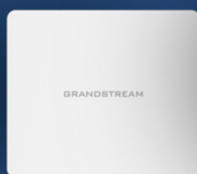
GWN7600 Series Wi-Fi Access Points

- Up to 750 concurrent clients
- Indoor and Outdoor Long Range
- 3.55Gbps aggregate throughput
- Dual-band 4x4:4 MU-MIMO
- Cloud management GWN.Cloud
- Embedded controller





GWN SERIES INDOOR APs



GWN7602



GWN7605



GWN7615



GWN7624



GWN7625



GWN7630



GWN7660



GWN7661



GWN7662



GWN7664



GWN SERIES ACCESS POINTS

Long-Range & Outdoor APs



GWN7605LR



GWN7630LR



GWN7660LR



GWN7664LR

(WEATHERPROOF LONG-RANGE)

GWN7605

802.11ac Wave-2 2x2:2 Wi-Fi Access Point

- 1.27Gbps aggregate wireless throughput and 2xGigabit wireline ports
- Up to 165 meters coverage range
- Support for 100+ Wi-Fi Client Devices
- Self-power adaptation upon auto-detection of PoE/PoE+
- Dual-band 2x2:2 MU-MIMO with beamforming technology



GWN7664

802.11ax 4x4:4 Wi-Fi 6 Access Point

- 3.55Gbps aggregate wireless throughput, 3.5Gbps aggregate wired throughput
- Dual-band 4x4:4 MU-MIMO with DL/UL OFDMA technology
- Up to 175-meter coverage range
- Supports 512 concurrent Wi-Fi client devices
- Advanced QoS to ensure real-time performance of low-latency applications
- Self-power adaptation upon auto-detection of PoE or PoE+
- Embedded controller, GWN.Cloud, GWN Manager



GWN7664LR

Outdoor Long-Range Wi-Fi 6 Access Point

- 3.55Gbps aggregate wireless throughput and 2x Gigabit Ethernet ports
- Dual-band 4x4:4 MU-MIMO with DL/UL OFDMA technology
- Up to 300 meters coverage range
- Supports 750+ concurrent Wi-Fi client devices
- IP66-level weatherproof capability when installed vertically
- 32 SSIDs total, 16 per radio
- 4 detachable/changeable antennas



Wi-Fi 6E Access Point GWN7665

Roadmap



- Tri-band 2x2:2 MU-MIMO
- 5.4Gbps wireless throughout, 3.5 Gigabit wired throughput
- 175-meter coverage range
- 384 concurrent clients
- PoE and PoE+
- Advanced QoS



Long-Range, Outdoor Wi-Fi 6 Access Point GWN7660ELR

Roadmap



- IP67 weatherproof casing
- 300-meter coverage range
- 5.4Gbps wireless throughput, 3.5Gbps wired throughput
- 1x Gig port + 1x 2.5G SFP port
- 256 concurrent clients
- PoE and PoE+
- Advanced QoS



Compact Wi-Fi 6 Cordless Phones

WP816 and WP826



- Dual-band Wi-Fi 6
- Integrated Bluetooth 5.0
- Accelerometer & Emergency button
- Rechargeable battery with 12 hour (WP826) or 6 hour (WP816) talk time
- WP826: 3 lines, 3 SIP accounts
- WP816: 2 lines, 2 SIP accounts



Roadmap

CloudUCM

Cloud-based IP PBX



CLOUDUCM

- All the functionality of our award-winning UCM Series IP PBX – now in the cloud
- Hosted on AWS
- Scalable and cost-effective
- Enterprise-grade security and reliability
- Powerful integrations and expansion
- Easily customizable





MUK Group

grandstream@muk.ua

Vladimir Ivlev

Regional Manager, Europe

+38 067 700 9242

vivlev@grandstream.com

www.grandstream.com

